

OFFICE

6500
GREENVILLE AVE.

DALLAS, TX 75206

FOR LEASE

JAMES DAVIS
EXECUTIVE VICE PRESIDENT
jdavis@nairl.com
214.256.7103

JUSTIN UTAY
EXECUTIVE VICE PRESIDENT
jutay@nairl.com
214.256.7166

SAMANTHA SANCHEZ
TRANSACTION COORDINATOR
ssanchez@nairl.com
214.256.7179





6500 GREENVILLE AVE.

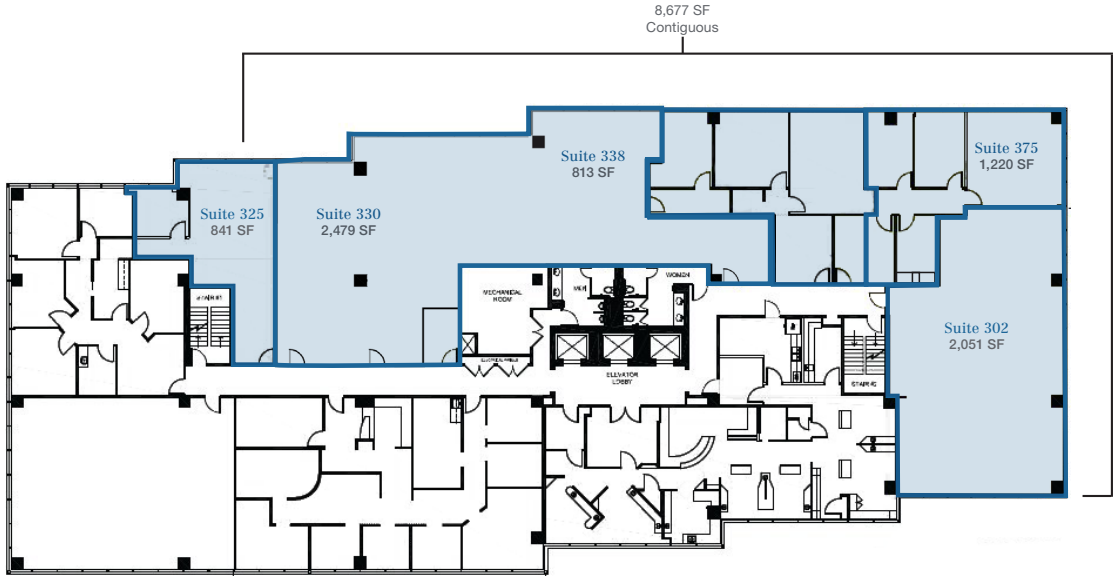
PROPERTY FEATURES

- Attentive & Responsive Local Ownership
- On-Site Security Guards
- Bus Stop Located on Property
- Move-In Ready Suites
- Parking Ratio: 3.36/1,000 SF
- Covered and Surface Parking
- Less Than a Mile to DART Rail Station
- 24-Hour Key-Card Access
- Situated Near Hotels, Shopping and Restaurants
- Easy Access to Major Traffic Arteries and Central Expressway

SPACE AVAILABILITY

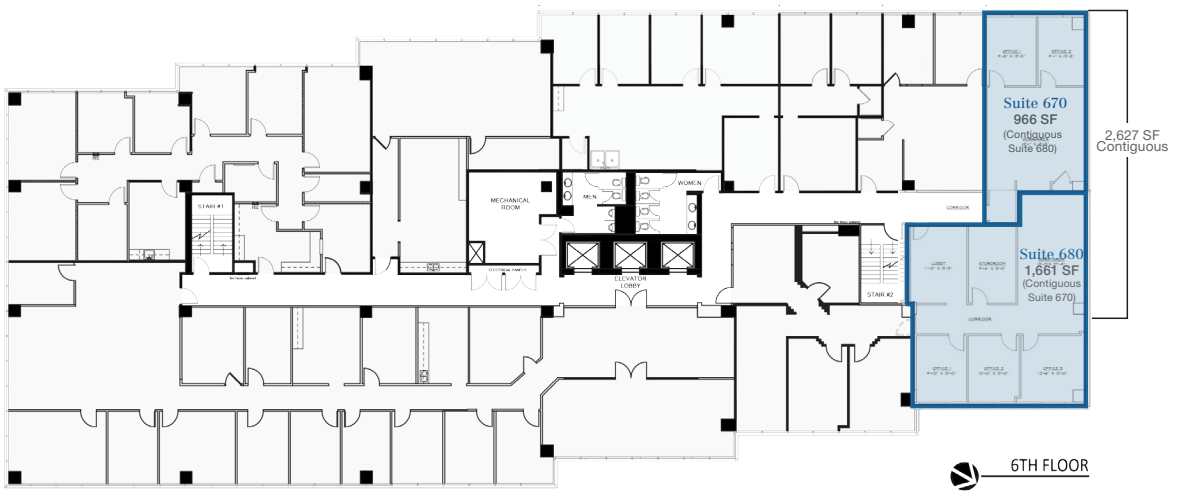
THIRD FLOOR

5 SUITES | 813 - 8,677 SF

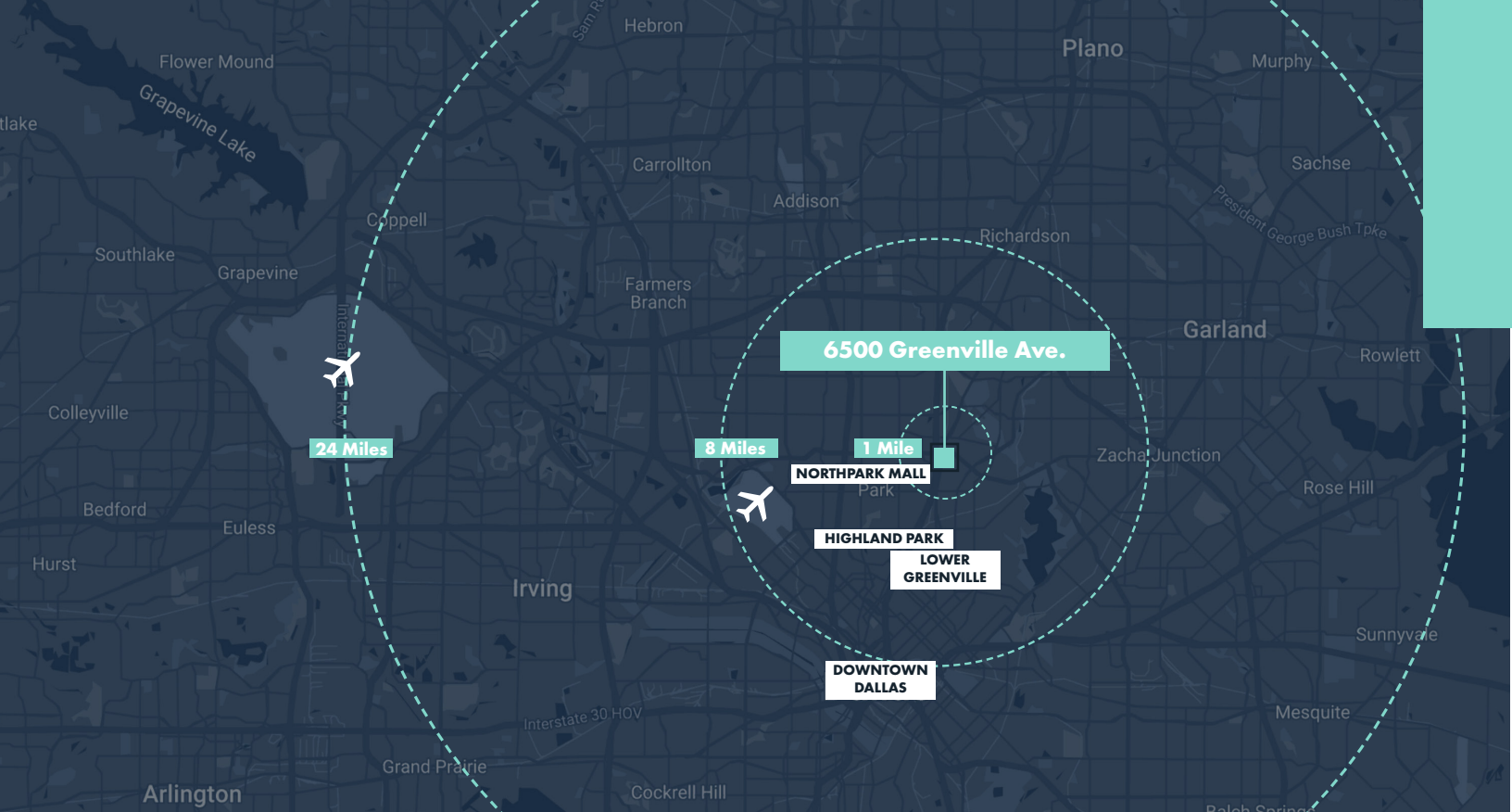


SIXTH FLOOR

2 SUITES | 966 - 2,627 SF



6TH FLOOR



DRIVE TIMES


CLOSE PROXIMITY

DFW

24 Miles
DFW Airport

 Dallas Love Field

8 Miles
Dallas Lovefield



7 Miles
Downtown Dallas

 **NORTHPARK**

1 Mile
North Park Mall





OFFICE

6500
GREENVILLE AVE.

DALLAS, TX 75206

FOR LEASE

JAMES DAVIS
EXECUTIVE VICE PRESIDENT
jdavis@nairl.com
214.256.7103

JUSTIN UTAY
EXECUTIVE VICE PRESIDENT
jutay@nairl.com
214.256.7166

SAMANTHA SANCHEZ
TRANSACTION COORDINATOR
ssanchez@nairl.com
214.256.7179

NAIRL.COM | 4851 LBJ Fwy, 10th Floor, Dallas TX | 214-256-7100